



GENERAL

BUILT: 2008
 CLASS: BV I + HULL + MACH
 TUG UNRESTRICTED
 NAVIGATION

DIMENSIONS

LENGTH O.A.: 26M
 BEAM: 11,50
 DEPTH: 3,50
 DRAUGHT: 2,35M APPROX

TANK CAPACITIES

FUEL OIL: 118M³
 FRESH WATER: 47M³
 DIRTY OIL: 1,7M³
 LUBOIL: 1,8M³
 BALLAST WATER: 58,3M³

PERFORMANCE

BOLLARD PULL: 33,1TON
 SPEED: 10,5 KNOTS

PROPULSION

MAIN ENGINES: 3 X CATERPILLAR 3412D TTA
 PROPULSION: 3 X PROMARIN FIXED PITCH
 PROPELLERS IN OPTIMA NOZZLES
 BOWTHRUSTER: 200 Kw - 360°

DECK LAY-OUT

DECK CRANES: 1 X HS MARINE
 (14,43T @ 15,1M)
 1 X HS MARINE
 (10,4T @ 10,2M)

TOWING WINCH: 50T PULL
 TUGGER WINCH: 20T PULL (FWD) +
 2 X 8T (AFT)

CAPSTAN
 BOWROLLER

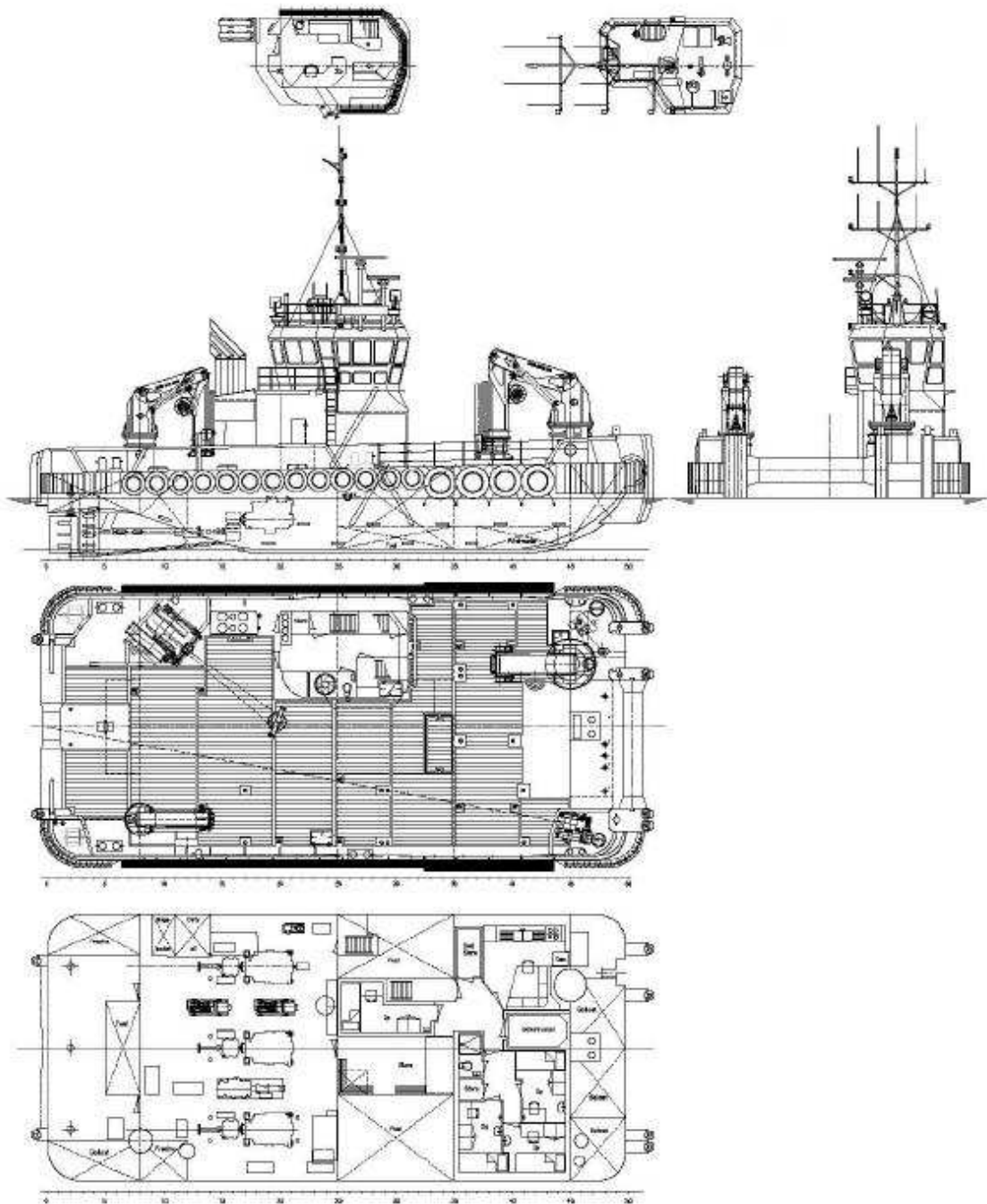
ACCOMMODATION

HEATED/AIR-CONDITIONED ACCOMMODATION
 FOR 8 EPRSON IN 4 CABINS, GALLEY,
 SANITARY FACILITIES, ETC.

NAVIGATION AND COMMUNICATION EQUIPM.

RADAR, COMPASS, GYRO COMPASS, GPS,
 VHF, SSB, INMARSAT C, SSB

All details given in good faith but without guarantee.



All details given in good faith but without guarantee.

International Marine Consultancy BVBA – Van Meterenkaai 1 – B-2000 Antwerp (Belgium)
T +32(0)3 226 24 10 – F +32(0)3 226 42 11 – info@imcbrokers.com – www.imcbrokers.com
-as brokers only-